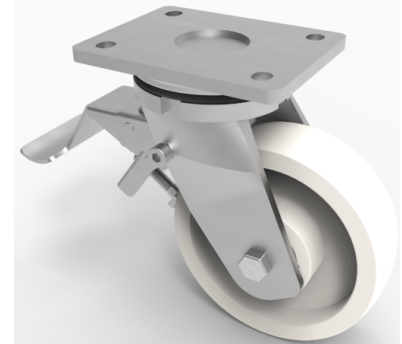


Nylon Plate Swivel Castor Brake 100mm 650kg Load

Product code: BZSAB100LNYBJSWB

Fabricated zinc plated swivel castor with plate fixing fitted with a white nylon wheel with ball bearings and a total lock brake. Wheel diameter 100mm, tread width 40mm, overall height 150mm, plate size 138mm x 110mm, hole centres 105mm x 80mm/75mm. Load capacity 650kg.



Diameter (mm)	100
Fixing Option	Plate
Castor Type	Swivel with Total Lock Brake
Bearing Type	Ball
Height (mm)	150
Plate Size (mm)	138 x 110
Hole Centres (mm)	105 x 80
To Suit Fixing Bolt (mm)	10
Wheel Material	Nylon
Colour / Shore Hardness	White Nylon
Temperature Resistance	-30 °C TO +80 °C
Top Plate Thickness (mm)	8
Fork Thickness (mm)	6
Swivel Radius (mm)	98
Load Capacity (kg)	650
Tread (mm)	40

BIL GROUP LTD

Porte Marsh Road, Calne, Wiltshire, SN11 9BW

Registered in England No: 2603821

VAT Reg: GB572705729

