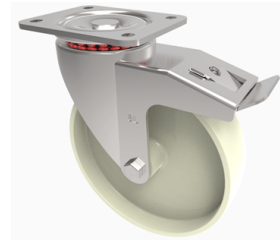


Nylon Plate Swivel Castor Brake 125mm 300kg Load

Product code: BZH125NYSWBHT



Pressed steel swivel castor with a top plate fixing fitted with a off white nylon wheel with a Plain Bore and total lock brake. Wheel diameter 125mm, tread width 35mm, overall height 155mm, top plate 105mm x 86mm, hole centres 80mm x 60mm Load capacity 300kg at a maximum 130c.

Diameter (mm)	125
Fixing Option	Plate
Castor Type	Swivel with Total Lock Brake
Plate Size (mm)	105 x 86
Hole Centres (mm)	80 X 60
To Suit Fixing Bolt (mm)	8
Height (mm)	155
Bearing Type	Plain
Swivel Radius (mm)	125
Wheel Material	Nylon
Colour / Shore Hardness	White High Temperature Nylon
Temperature Resistance	-30 °C to +130 °C
Load Capacity (kg)	230
Tread (mm)	40
Top Plate Thickness (mm)	4
Fork Thickness (mm)	4

BIL GROUP LTD

Porte Marsh Road, Calne, Wiltshire, SN11 9BW

Registered in England No: 2603821

VAT Reg: GB572705729

