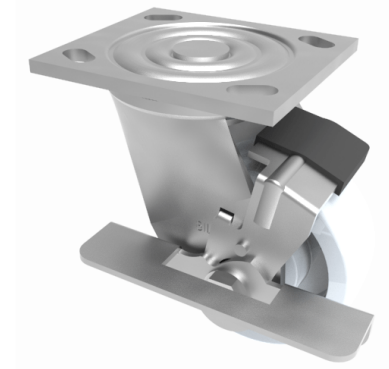


Nylon Plate Swivel Castor Brake 150mm 600kg Load

Product code: BZJ150NYBBK/USA

Fabricated swivel castor with a top plate fixing fitted with a white nylon wheel with a roller bearing and side fitting wheel brake. Wheel diameter 150mm, tread width 45mm, overall height 190mm, top plate 115mm x 102mm, hole centres 92mm x 67mm and 76mm x 76mm. load capacity 600kg.



Diameter (mm)	150
Fixing Option	Plate
Castor Type	Swivel with Wheel Brake
Bearing Type	Roller
Height (mm)	190
Plate Size (mm)	115 x 102
Hole Centres (mm)	76/92 x 76/67
To Suit Fixing Bolt (mm)	10
Wheel Material	Nylon
Colour / Shore Hardness	White Nylon
Temperature Resistance	-30 °C TO +80 °C
Top Plate Thickness (mm)	5.5
Fork Thickness (mm)	5.5
Swivel Radius (mm)	132
Load Capacity (kg)	600
Tread (mm)	45

BIL GROUP LTD

Porte Marsh Road, Calne, Wiltshire, SN11 9BW

Registered in England No: 2603821

VAT Reg: GB572705729

