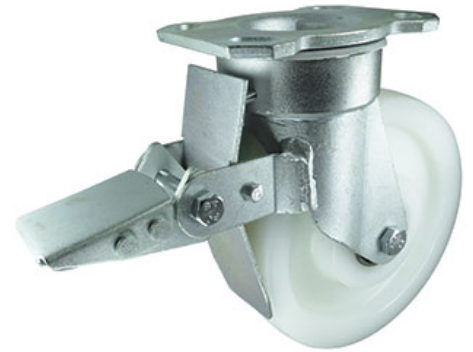


Nylon Plate Swivel Castor Brake 150mm 800kg Load

Product code: VSH150NYJHDP06SWB

Fabricated steel swivel castor with a top plate fixing fitted with white nylon wheel with ball journal bearings and total stop brake. Wheel diameter 150mm, tread width 50mm, overall height 202mm, top plate 150mm x 110mm, hole centres 105mm x 80mm or 120mm x 60mm. Load capacity 800kg.



Diameter (mm)	150
Castor Type	Swivel
Fixing Option	Plate
Height (mm)	202
Wheel Material	Nylon
Colour / Shore Hardness	White Nylon
Temperature Resistance	-30°C to 80°C
Bearing Type	Ball
Load Capacity (kg)	800
Tread width (mm)	50
Swivel Radius (mm)	TBC
Plate Size (mm)	150 x 110
Hole Centres (mm)	60/80 x 120/105
Top Plate Thickness (mm)	7.5
Fork Thickness (mm)	4.5
To Suit Fixing Bolt (mm)	12
Brand	Varley

BIL GROUP LTD

Porte Marsh Road, Calne, Wiltshire, SN11 9BW

Registered in England No: 2603821

VAT Reg: GB572705729

