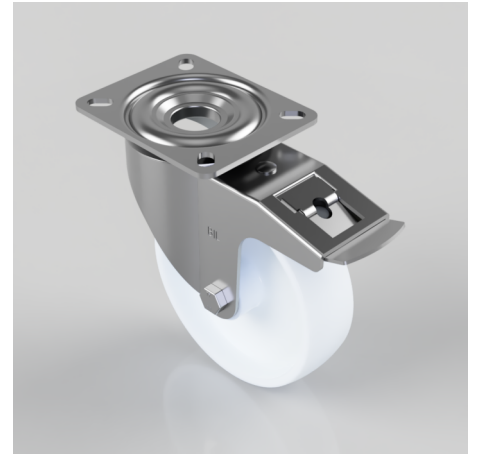


## Nylon Plate Swivel Castor Brake 160mm 350kg Load

**Product code: BZMM160NYBSWB**

Pressed steel swivel Swivel Castor Brake castor with a top plate fixing fitted with a white nylon wheel with a roller bearing and total lock brake. Wheel diameter 160mm, tread width 45mm overall height 195mm, top plate 135mm x 110mm, hole centres 105mm x 80mm. Load capacity 350kg.



|                          |                              |
|--------------------------|------------------------------|
| Diameter (mm)            | 160                          |
| Castor Type              | Swivel with Total Lock Brake |
| Fixing Option            | Plate                        |
| Height (mm)              | 195                          |
| Wheel Material           | Nylon                        |
| Colour / Shore Hardness  | White Nylon                  |
| Temperature Resistance   | -30 °C TO +80 °C             |
| Bearing Type             | Roller                       |
| Load Capacity (kg)       | 350                          |
| Tread (mm)               | 45                           |
| Swivel Radius (mm)       | 167                          |
| Plate Size (mm)          | 135 x 110                    |
| Hole Centres (mm)        | 105 x 80                     |
| Top Plate Thickness (mm) | 4                            |
| Fork Thickness (mm)      | 3                            |
| To Suit Fixing Bolt (mm) | 10                           |

### BIL GROUP LTD

Porte Marsh Road, Calne, Wiltshire, SN11 9BW

Registered in England No: 2603821

VAT Reg: GB572705729

