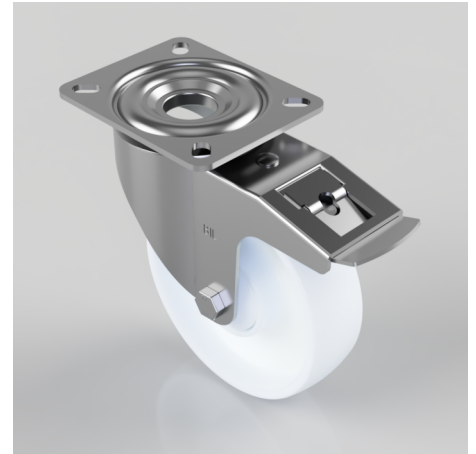


## Nylon Plate Swivel Castor Brake 160mm 400kg Load

**Product code: BZMM160NYBJSWB**

Pressed steel swivel castor with a top plate fixing fitted with a white nylon wheel with a single ball bearing and retaining caps and a total lock brake. Wheel diameter 160mm, tread width 45mm, overall height 195mm, top plate 135mm x 110mm, hole centres 105mm x 80mm. Load capacity 350kg.



Diameter (mm)	160
Castor Type	Swivel with Total Lock Brake
Fixing Option	Plate
Height (mm)	195
Wheel Material	Nylon
Colour / Shore Hardness	White Nylon
Temperature Resistance	-30 °C TO +80 °C
Bearing Type	Ball
Load Capacity (kg)	400
Tread (mm)	45
Swivel Radius (mm)	167
Plate Size (mm)	135 x 110
Hole Centres (mm)	105 x 80
Top Plate Thickness (mm)	4
Fork Thickness (mm)	3
To Suit Fixing Bolt (mm)	10