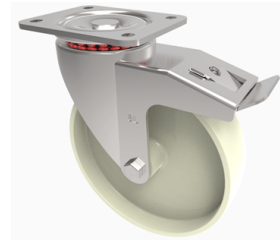


## Nylon Plate Swivel Castor Brake 200mm 700kg Load

**Product code: BZSPH200NYSWB/HT**



Pressed steel swivel castor with a top plate fixing fitted with a off white high temperature fibre glass filled nylon wheel with plain bore and total lock brake. Wheel diameter 200mm, tread width 50mm, overall height 238mm, top plate 135mm x 110mm, hole centres 105mm x 80/75mm. Load capacity 700kg at 130c Maximum temperature REACH compliant

Diameter (mm)	200
Fixing Option	Plate
Castor Type	Swivel with Total Lock Brake
Plate Size (mm)	135 x 110
Hole Centres (mm)	105 x 80/75
To Suit Fixing Bolt (mm)	10
Height (mm)	238
Bearing Type	Plain
Swivel Radius (mm)	167
Wheel Material	Nylon
Colour / Shore Hardness	White High Temperature Nylon
Temperature Resistance	-30 °C to +130 °C
Load Capacity (kg)	700
Tread (mm)	50
Top Plate Thickness (mm)	5
Fork Thickness (mm)	5

### BIL GROUP LTD

Porte Marsh Road, Calne, Wiltshire, SN11 9BW

Registered in England No: 2603821

VAT Reg: GB572705729

