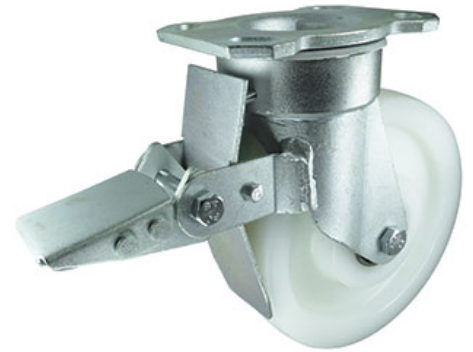


## Nylon Plate Swivel Castor Brake 250mm 1200kg Load

**Product code: VSH250NYJHDP06SWB**

Fabricated steel swivel castor with a top plate fixing fitted with white nylon wheel with ball journal bearings and total stop brake. Wheel diameter 250mm, tread width 50mm, overall height 300mm, top plate 150mm x 110mm, hole centres 105mm x 80mm or 120mm x 60mm. Load capacity 1200kg.



Diameter (mm)	250
Castor Type	Swivel
Fixing Option	Plate
Height (mm)	303
Wheel Material	Nylon
Colour / Shore Hardness	White Nylon
Temperature Resistance	-30°C to 80°C
Bearing Type	Ball
Load Capacity (kg)	1200
Tread width (mm)	50
Swivel Radius (mm)	TBC
Plate Size (mm)	150 x 110
Hole Centres (mm)	60/80 x 120/105
Top Plate Thickness (mm)	7.5
Fork Thickness (mm)	4.5
To Suit Fixing Bolt (mm)	12
Brand	Varley