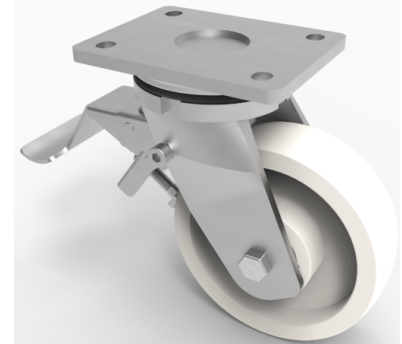


## Nylon Plate Swivel Castor Brake 250mm 1300kg Load

**Product code: BZSAB250LNYBJSWB**

Fabricated zinc plated swivel castor with plate fixing fitted with a white nylon wheel with ball bearings and total lock brake. Wheel diameter 250mm, tread width 60mm, overall height 300mm, plate size 138mm x 110mm, hole centres 105mm x 80mm/75mm. Load capacity 1300kg.



Diameter (mm)	250
Fixing Option	Plate
Castor Type	Swivel with Total Lock Brake
Bearing Type	Ball
Height (mm)	300
Plate Size (mm)	138 x 110
Hole Centres (mm)	105 x 80
To Suit Fixing Bolt (mm)	10
Wheel Material	Nylon
Colour / Shore Hardness	White Nylon
Temperature Resistance	-30 °C TO +80 °C
Top Plate Thickness (mm)	8
Fork Thickness (mm)	6
Swivel Radius (mm)	200
Load Capacity (kg)	1300
Tread (mm)	60