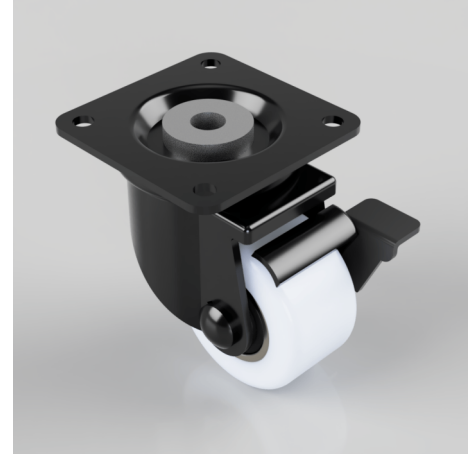


## Nylon Plate Swivel Castor Brake 50mm 200kg Load

**Product code: BZXH50NYBJBK**

Pressed steel swivel castor with top plate fixing, Fitted with a white nylon wheel with ball bearing with side mounted brake. Wheel diameter 50mm, tread width 28mm, overall height 75mm, top plate 65mm x 65mm, hole centres 50mm x 50mm. Load capacity 200kg.



Fixing Option	Plate
Castor Type	Swivel with Wheel Brake
Load Capacity (kg)	200
Wheel Material	Nylon
Diameter (mm)	50
Bearing Type	Plain
Tread (mm)	28
Height (mm)	75
Swivel Radius (mm)	50
Colour / Shore Hardness	White Nylon
Plate Size (mm)	65 x 65
Hole Centres (mm)	50 x 50
Top Plate Thickness (mm)	2.5
Fork Thickness (mm)	2.5
Fixing Bolt (mm)	6
Temperature Resistance	-30 °C TO +80 °C

### BIL GROUP LTD

Porte Marsh Road, Calne, Wiltshire, SN11 9BW

Registered in England No: 2603821

VAT Reg: GB572705729

