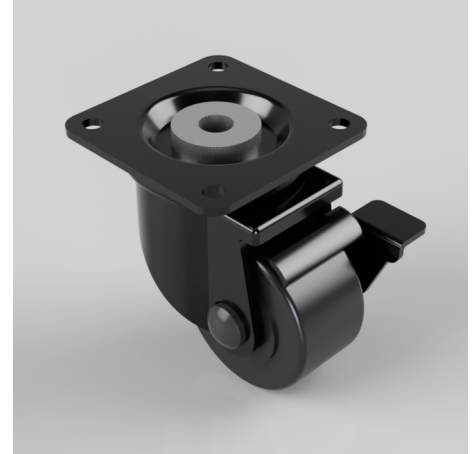


Nylon Plate Swivel Castor Brake 50mm 200kg Load

Product code: BZXH50NYBK

Pressed steel swivel castor, fitted with a top plate, black nylon wheel, with plain bore and a side fitting wheel brake, 50mm wheel diameter, 28mm tread width, 75mm overall height, 65 x 65mm top plate, 50 x 50mm bolt holes, to carry a capacity of 200kgs.



Fixing Option	Plate
Castor Type	Swivel with Wheel Brake
Load Capacity (kg)	200
Wheel Material	Nylon
Diameter (mm)	50
Bearing Type	Plain
Tread (mm)	28
Height (mm)	65
Swivel Radius (mm)	50
Colour / Shore Hardness	White Nylon
Plate Size (mm)	65 x 65
Hole Centres (mm)	50 x 50
Top Plate Thickness (mm)	2.5
Fork Thickness (mm)	2.5
Fixing Bolt (mm)	6
Temperature Resistance	-30 °C TO +80 °C

BIL GROUP LTD

Porte Marsh Road, Calne, Wiltshire, SN11 9BW

Registered in England No: 2603821

VAT Reg: GB572705729

