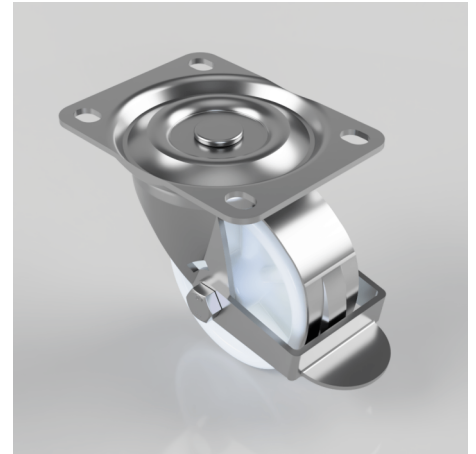


Nylon Plate Swivel Castor Brake 75mm 125kg Load

Product code: BZH75NYBR

Pressed steel swivel castor with a top plate fixing fitted with a white nylon wheel with a plain bore with wheel brake. Wheel diameter 75mm, tread width 28mm, overall height 95mm, top plate 105mm x 80mm, hole centres 80mm/87mm x 60mm. Load capacity 125kg.



| | |
|--------------------------|-------------------------|
| Diameter (mm) | 75 |
| Castor Type | Swivel with Wheel Brake |
| Fixing Option | Plate |
| Height (mm) | 95 |
| Wheel Material | Nylon |
| Colour / Shore Hardness | White Nylon |
| Temperature Resistance | -30 °C TO +80 °C |
| Bearing Type | Plain |
| Load Capacity (kg) | 125 |
| Tread (mm) | 28 |
| Swivel Radius (mm) | 84 |
| Plate Size (mm) | 105 X 80 |
| Hole Centres (mm) | 80 X 60 |
| Top Plate Thickness (mm) | 2.5 |
| Fork Thickness (mm) | 2.5 |
| To Suit Fixing Bolt (mm) | 8 |