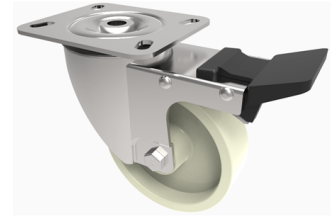


Nylon Plate Swivel Castor Brake 80mm 220kg Load

Product code: BZMH80NYHTSWB



Pressed steel swivel castor with a top plate fixing fitted with a off white nylon wheel with a Plain Bore and a total lock brake. Wheel diameter 80mm, tread width 35mm, overall height 133mm, top plate 100mm x 85mm, hole centres 80mm x 60mm or 75mm x 45mm. Load capacity 220kg. 130C max temp. (Catalogue SKU BZMH80NYSWBHT)

Diameter (mm)	80
Fixing Option	Plate
Castor Type	Swivel with Total Lock Brake
Plate Size (mm)	100 x 85
Hole Centres (mm)	80/75 x 60/45
To Suit Fixing Bolt (mm)	8
Height (mm)	110
Bearing Type	Plain
Swivel Radius (mm)	125
Wheel Material	Nylon
Colour / Shore Hardness	White High Temperature Nylon
Temperature Resistance	-30 °C to +130 °C
Load Capacity (kg)	220
Tread (mm)	35
Top Plate Thickness (mm)	2.5
Fork Thickness (mm)	2.5

BIL GROUP LTD

Porte Marsh Road, Calne, Wiltshire, SN11 9BW

Registered in England No: 2603821

VAT Reg: GB572705729

