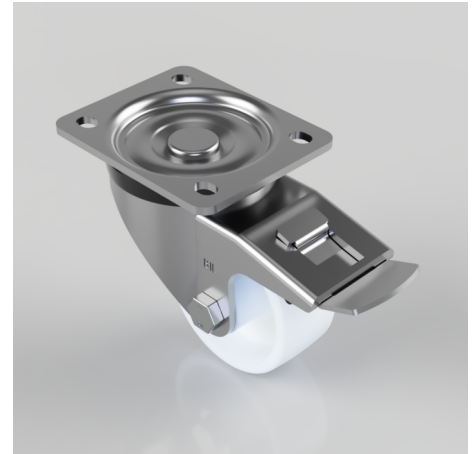


## Nylon Plate Swivel Castor Brake 80mm 250kg Load

**Product code: BZH80NYBSWB**

Pressed steel swivel castor with a top plate fixing fitted with a white nylon wheel with a roller bearing and total lock brake. Wheel diameter 80mm, tread width 35mm, overall height 110mm, plate size 105mm x 86mm, hole centres 80mm x 60mm. Load capacity 250kg.



Diameter (mm)	80
Castor Type	Swivel with Total Lock Brake
Fixing Option	Plate
Height (mm)	110
Wheel Material	Nylon
Colour / Shore Hardness	White Nylon
Temperature Resistance	-30 °C TO +80 °C
Bearing Type	Roller
Load Capacity (kg)	250
Tread (mm)	35
Swivel Radius (mm)	123
Plate Size (mm)	105 x 86
Hole Centres (mm)	80 X 60
Top Plate Thickness (mm)	4
Fork Thickness (mm)	4
To Suit Fixing Bolt (mm)	8