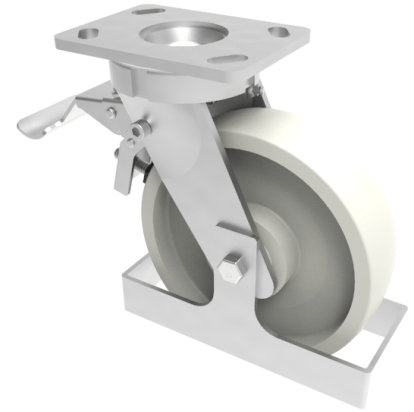


Nylon Plate Swivel Castor Brake Footguard 150mm 1000kg load

Product code: BZK150NYBJSWBF

Fabricated swivel castor with a top plate fixing fitted with a white nylon wheel with ball bearings, total lock brake and footguard. Wheel diameter 150mm, tread width 45mm, overall height 200mm, top plate 150mm x 110mm, hole centres 105mm x 80mm or 121mm x 59mm. Load capacity 1000kg.



Height (mm)	200
Tread (mm)	45
To Suit Fixing Bolt (mm)	12
Bearing Type	Ball
Diameter (mm)	150
Wheel Material	Nylon
Fixing Option	Plate
Castor Type	Swivel with Total Lock Brake
Load Capacity (kg)	1000
Colour / Shore Hardness	White Nylon
Swivel Radius (mm)	140
Plate Size (mm)	150 x 110
Hole Centres (mm)	105 x 80/75
Fork Thickness (mm)	6
Top Plate Thickness (mm)	7.5
Temperature Resistance	-30 °C TO +80 °C

BIL GROUP LTD

Porte Marsh Road, Calne, Wiltshire, SN11 9BW

Registered in England No: 2603821

VAT Reg: GB572705729

