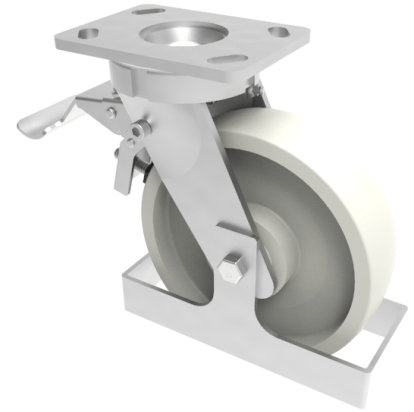


Nylon Plate Swivel Castor Brake Footguard 200mm 1000kg load

Product code: BZK200NYBJSWBF

Fabricated swivel castor with a top plate fixing fitted with a nylon wheel with ball bearings, total lock brake and footguard. Wheel diameter 200mm, tread width 50mm, overall height 250mm, top plate 150mm x 110mm, hole centres 105mm x 80mm or 121mm x 59mm. Load capacity 1100kg.



Height (mm)	250
Tread (mm)	50
To Suit Fixing Bolt (mm)	12
Bearing Type	Ball
Diameter (mm)	200
Wheel Material	Nylon
Fixing Option	Plate
Castor Type	Swivel with Total Lock Brake
Load Capacity (kg)	1000
Colour / Shore Hardness	White Nylon
Swivel Radius (mm)	165
Plate Size (mm)	150 x 110
Hole Centres (mm)	105/121 x 80/59
Fork Thickness (mm)	6
Top Plate Thickness (mm)	7.5
Temperature Resistance	-30 °C TO +80 °C