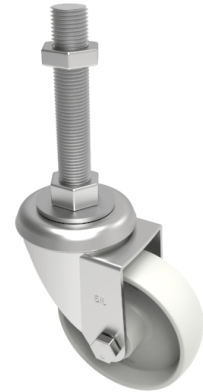


Nylon Swivel Castor 100mm 270kg Load

Product code: SSEH100NYBM20X200

Grade 304 Pressed stainless steel swivel castor with a M20 x200mm adjustable stem fitted with a white nylon wheel with a roller bearing. Wheel diameter 100mm, tread width 32mm, overall height 128mm, Load capacity 270kg.



| | |
|-------------------------|------------------|
| Bearing Type | Roller |
| Fixing Option | Bolt Hole, Stem |
| Height (mm) | 128 |
| Castor Material | Stainless Steel |
| Castor Type | Swivel |
| Swivel Radius (mm) | 90 |
| Load Capacity (kg) | 270 |
| Thread Size | M20 x 200mm |
| Tread (mm) | 32 |
| Diameter (mm) | 100 |
| Wheel Material | Nylon |
| Colour / Shore Hardness | White Nylon |
| Fork Thickness (mm) | 3 |
| Temperature Resistance | -30 °C TO +80 °C |
| Head Dia (mm) | 76 |