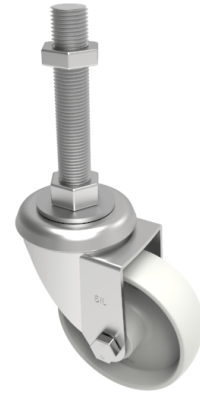


## Nylon Swivel Castor 100mm 270kg Load

**Product code: SSEH100NYBM16X100**

Grade 304 Pressed stainless steel swivel castor with a M16 x100mm adjustable stem fitted with a white nylon wheel with a roller bearing. Wheel diameter 100mm, tread width 32mm, overall height 128mm, Load capacity 270kg.



Bearing Type	Roller
Fixing Option	Bolt Hole, Stem
Height (mm)	128
Castor Material	Stainless Steel
Castor Type	Swivel
Swivel Radius (mm)	90
Load Capacity (kg)	270
Thread Size	M16 x100mm
Tread (mm)	32
Diameter (mm)	100
Wheel Material	Nylon
Colour / Shore Hardness	White Nylon
Fork Thickness (mm)	3
Temperature Resistance	-30 °C TO +80 °C
Head Dia (mm)	76