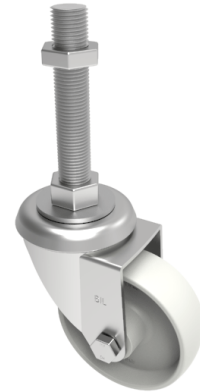


Nylon Swivel Castor 125mm 300kg Load

Product code: SSEH125NYBM16X200

Grade 304 Pressed stainless steel swivel castor with a M16 x200mm adjustable stem fitted with a white nylon wheel with a roller bearing. Wheel diameter 125mm, tread width 35mm, overall height 155mm, Load capacity 300kg.



Bearing Type	Roller
Fixing Option	Bolt Hole, Stem
Height (mm)	156
Castor Material	Stainless Steel
Castor Type	Swivel
Swivel Radius (mm)	106
Load Capacity (kg)	300
Thread Size	M16 x 200mm
Tread (mm)	32
Diameter (mm)	125
Wheel Material	Nylon
Colour / Shore Hardness	White Nylon
Fork Thickness (mm)	3
Temperature Resistance	-30 °C TO +80 °C
Head Dia (mm)	76