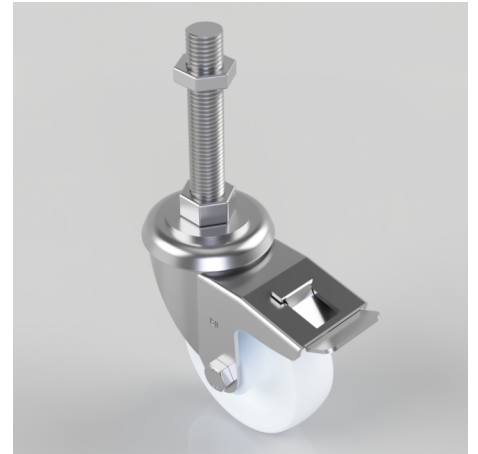


## Nylon Swivel Castor Brake 100mm 270kg Load

**Product code: SSEH100NYBSWBM20X100**

Grade 304 Pressed stainless steel swivel castor with a M20 x100mm adjustable stem fitted with a white nylon wheel with a roller bearing and total lock brake. Wheel diameter 100mm, tread width 32mm, overall height 128mm. Load capacity 270kg.



Bearing Type	Roller
Fixing Option	Bolt Hole, Stem
Height (mm)	128
Castor Material	Stainless Steel
Castor Type	Swivel with Total Lock Brake
Swivel Radius (mm)	115
Load Capacity (kg)	270
Thread Size	M20 x 100mm
Tread (mm)	32
Diameter (mm)	100
Wheel Material	Nylon
Colour / Shore Hardness	White Nylon
Fork Thickness (mm)	3
Temperature Resistance	-30 °C TO +80 °C
Head Dia (mm)	76

### BIL GROUP LTD

Porte Marsh Road, Calne, Wiltshire, SN11 9BW

Registered in England No: 2603821

VAT Reg: GB572705729

