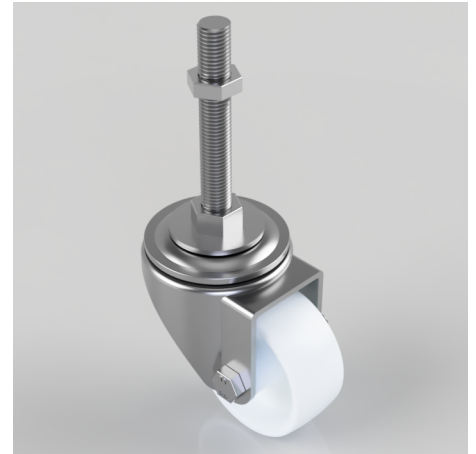


Nylon Swivel Stem Castor 80mm 250kg Load

Product code: BZH80NYM16X100

Pressed steel swivel castor with a M16 X 100mm adjustable stem, fitted with a white nylon wheel with a Plain Bore. Wheel diameter 80mm, tread width 35mm, overall height 106mm, Load capacity 250kg.



Bearing Type	Plain
Fixing Option	Bolt Hole, Stem
Height (mm)	106
Castor Material	Zinc plated
Castor Type	Swivel
Load Capacity (kg)	250
Thread Size	M16 x100mm
Tread (mm)	35
Diameter (mm)	80
Wheel Material	Nylon
Colour / Shore Hardness	White Nylon
Fork Thickness (mm)	3.5
Temperature Resistance	-30 °C TO +80 °C
Head Dia (mm)	76