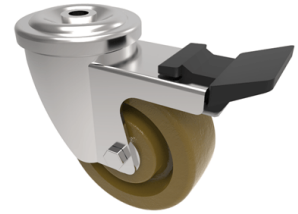


Phenolic Bolt Hole Swivel Castor Brake 100mm 150kg Load

Product code: SSMH100ANBH12SWBHT



Grade 304 Stainless steel swivel castor with a 12mm bolt hole fitted with a brown phenolic wheel with a Plain Bore and total lock brake. Wheel diameter 100mm, tread width 35mm, overall height 133mm. Load capacity 180kg at a maximum 250c.

Diameter (mm)	100
Fixing Option	Bolt Hole
Castor Type	Swivel with Total Lock Brake
Head Dia (mm)	78
To Suit Fixing Bolt (mm)	12
Height (mm)	128
Bearing Type	Plain
Swivel Radius (mm)	125
Wheel Material	Phenolic
Colour / Shore Hardness	Black High Temperature Phenolic
Temperature Resistance	-30 °C to +250 °C
Load Capacity (kg)	220
Tread (mm)	38
Fork Thickness (mm)	2.5