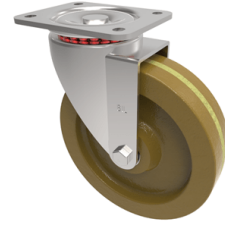


Phenolic Plate Swivel Castor 100mm 180kg Load

Product code: BZH100ANHT



Pressed steel swivel castor with a top plate fixing fitted with a brown phenolic wheel with a Plain Bore high temperature grease and no swivel seal. Wheel diameter 100mm, tread width 38mm, overall height 128mm, top plate 105mm x 86mm, hole centres 80mm x 60mm. Load capacity 180kg at maximum temperature 250c

| | |
|--------------------------|---------------------------------|
| Diameter (mm) | 100 |
| Fixing Option | Plate |
| Castor Type | Swivel |
| Plate Size (mm) | 105 x 86 |
| Hole Centres (mm) | 80 X 60 |
| To Suit Fixing Bolt (mm) | 8 |
| Height (mm) | 128 |
| Bearing Type | Plain |
| Swivel Radius (mm) | 90 |
| Wheel Material | Phenolic |
| Colour / Shore Hardness | Brown High Temperature Phenolic |
| Temperature Resistance | -30 °C to +250 °C |
| Load Capacity (kg) | 150 |
| Tread (mm) | 38 |
| Top Plate Thickness (mm) | 4 |
| Fork Thickness (mm) | 4 |