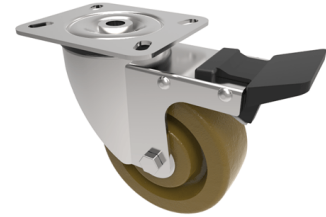


## Phenolic Plate Swivel Castor Brake 100mm 150kg Load

**Product code: BZXM100ANSWBHT**



Pressed steel swivel castor with a top plate fixing fitted with a brown phenolic wheel with a plain bore with total lock brake. Wheel diameter 100mm, tread width 38mm, overall height 128mm, top plate 100mm x 85mm, hole centres 80mm x 60mm or 75mm x 45mm. Load capacity 180kg at a maximum temperature of 250c.

Diameter (mm)	100
Fixing Option	Plate
Castor Type	Swivel with Total Lock Brake
Plate Size (mm)	100 x 85
Hole Centres (mm)	80/75 x 60/45
To Suit Fixing Bolt (mm)	8
Height (mm)	128
Bearing Type	Plain
Swivel Radius (mm)	125
Wheel Material	Phenolic
Colour / Shore Hardness	Black High Temperature Phenolic
Temperature Resistance	-30 °C to +250 °C
Load Capacity (kg)	200
Tread (mm)	38
Top Plate Thickness (mm)	2.5
Fork Thickness (mm)	2.5

### BIL GROUP LTD

Porte Marsh Road, Calne, Wiltshire, SN11 9BW

Registered in England No: 2603821

VAT Reg: GB572705729

