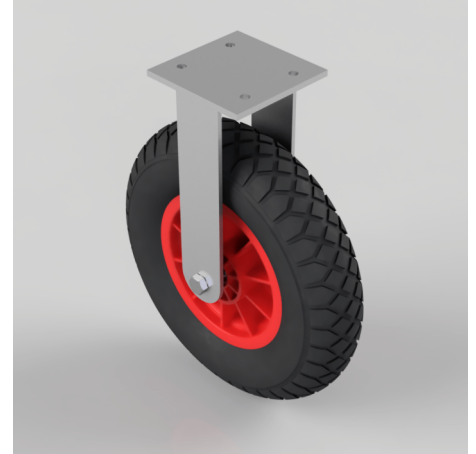


Pneumatic wheel Plate Fixed Castor 400mm 200kg Load

Product code: BZFPCF400PRBD

Fabricated fixed castor with a top plate fixing fitted with a 4 ply black ribbed pattern pneumatic tyre with a polypropylene centre with roller bearings. Wheel diameter 400, tread width 100mm, overall height 480mm, plate size 150mm x 150mm, hole centres 105mm x 80mm. Load capacity 200kg at max speed 4KPH, for non-towing applications please note we manufacture to order and therefore a 24 hour delivery may not be possible.



Diameter (mm)	400
Height (mm)	480
Swivel Radius (mm)	100
Plate Size (mm)	150 x 150
Hole Centres (mm)	105 x 80/75
Bearing Type	Roller
Load Capacity (kg)	200
Fixing Option	Plate
Castor Type	Fixed
Wheel Material	Pneumatic Wheels
Colour / Shore Hardness	Black Pneumatic Tyre on Polypropylene Rims / 4 Ply
Ply Rating	4
Top Plate Thickness (mm)	7.5
To Suit Fixing Bolt (mm)	10
Fork Thickness (mm)	7.5
Temperature Resistance	-10 °C TO +60 °C

BIL GROUP LTD

Porte Marsh Road, Calne, Wiltshire, SN11 9BW

Registered in England No: 2603821

VAT Reg: GB572705729

