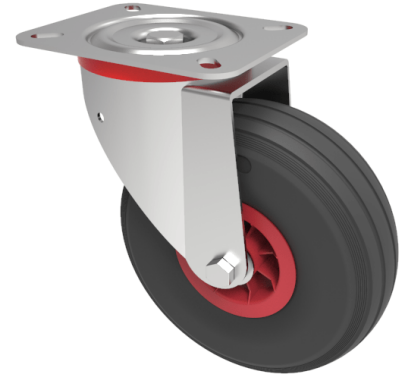


## Pneumatic wheel Plate Swivel Castor 260mm 120kg Load

**Product code: BZPC260PRB/RIB**

Pressed steel swivel castor with a top plate fixing fitted with a black ribbed pattern pneumatic tyred red polypropylene centred wheel (4 ply) with a roller bearing Wheel diameter 260mm, tread width 85mm, overall height 307mm, top plate 200mm x 160mm, hole centres 150mm x 115mm. Load capacity 120kg.



Diameter (mm)	260
Height (mm)	307
Plate Size (mm)	200 X 160
Hole Centres (mm)	150 x 115
Bearing Type	Roller
Load Capacity (kg)	120
Fixing Option	Plate
Castor Type	Swivel
Wheel Material	Pneumatic Wheels
Colour / Shore Hardness	Black Pneumatic Tyre on Polypropylene Rims / 4 Ply
Ply Rating	4
Swivel Radius (mm)	215
Top Plate Thickness (mm)	4
To Suit Fixing Bolt (mm)	14
Fork Thickness (mm)	3
Temperature Resistance	-10 °C TO +60 °C

### BIL GROUP LTD

Porte Marsh Road, Calne, Wiltshire, SN11 9BW

Registered in England No: 2603821

VAT Reg: GB572705729

