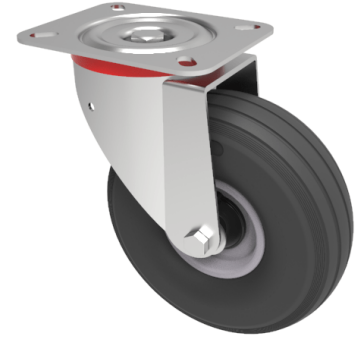


Pneumatic wheel Plate Swivel Castor 260mm 200kg Load

Product code: BZPC260MRB/RIB



Pressed steel swivel castor with a top plate fixing fitted with a 4ply black ribbed pattern pneumatic tyred steel centred wheel with a roller bearing. Wheel diameter 260mm, tread width 85mm, overall height 307mm, top plate 200mm x 160mm, hole centres 150mm x 115mm. Load capacity 200kg at max speed 4KPH, for non-towing applications please note we manufacture to order and therefore a 24 hour delivery may not be possible.

Diameter (mm)	260
Height (mm)	307
Plate Size (mm)	200 X 160
Hole Centres (mm)	150 x 115
Bearing Type	Roller
Load Capacity (kg)	200
Fixing Option	Plate
Castor Type	Swivel
Wheel Material	Pneumatic Wheels
Colour / Shore Hardness	Black Pneumatic Tyre on Steel Rims / 4 Ply
Ply Rating	4
Swivel Radius (mm)	215
Top Plate Thickness (mm)	4
To Suit Fixing Bolt (mm)	14
Fork Thickness (mm)	3
Temperature Resistance	-10 °C TO +60 °C

BIL GROUP LTD

Porte Marsh Road, Calne, Wiltshire, SN11 9BW

Registered in England No: 2603821

VAT Reg: GB572705729

