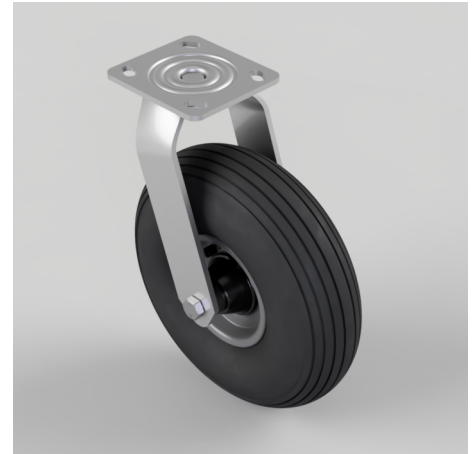


## Pneumatic wheel Plate Swivel Castor 260mm 200kg Load

**Product code: BZFPC260MRB/RIB**

Fabricated swivel castor with a top plate fixing fitted with a 4 ply black ribbed pattern pneumatic tyre with a grey steel centre and roller bearing. Wheel diameter 260, tread width 85mm, overall height 318mm, plate size 115mm x 105mm, hole centres 92mm x 67 or 76mm x 76mm. Load capacity 200kg.



Diameter (mm)	260
Height (mm)	318
Plate Size (mm)	115 x 105
Hole Centres (mm)	76/92 x 76/67
Bearing Type	Roller
Load Capacity (kg)	200
Fixing Option	Plate
Castor Type	Swivel
Wheel Material	Pneumatic Wheels
Colour / Shore Hardness	Black Pneumatic Tyre on Steel Rims / 4 Ply
Ply Rating	4
Swivel Radius (mm)	190
Top Plate Thickness (mm)	5
To Suit Fixing Bolt (mm)	10
Fork Thickness (mm)	5.5
Temperature Resistance	-10 °C TO +60 °C

### BIL GROUP LTD

Porte Marsh Road, Calne, Wiltshire, SN11 9BW

Registered in England No: 2603821

VAT Reg: GB572705729

