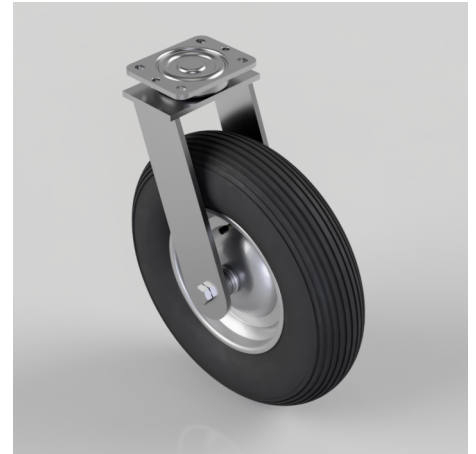


## Pneumatic wheel Plate Swivel Castor 400mm 250kg Load

**Product code: BZFPC400MRB**

Fabricated swivel castor with a top plate fixing fitted with a 4 ply black ribbed pattern pneumatic tyre with a steel disc centre with roller bearings. Wheel diameter 400, tread width 100mm, overall height 480mm, plate size 138mm x 109mm, hole centres 105mm x 80/75mm. Load capacity 250kg.at max speed 4KPH, for non-towing applications please note we manufacture to order and therefore a 24 hour delivery may not be possible..



Diameter (mm)	400
Height (mm)	480
Plate Size (mm)	138 x 109
Hole Centres (mm)	105 x 80/75
Bearing Type	Roller
Load Capacity (kg)	250
Fixing Option	Plate
Castor Type	Swivel
Wheel Material	Pneumatic Wheels
Colour / Shore Hardness	Black Pneumatic Tyre on Steel Rims / 4 Ply
Ply Rating	4
Swivel Radius (mm)	290
Top Plate Thickness (mm)	7.5
To Suit Fixing Bolt (mm)	10
Fork Thickness (mm)	7.5
Temperature Resistance	-10 °C TO +60 °C

### BIL GROUP LTD

Porte Marsh Road, Calne, Wiltshire, SN11 9BW

Registered in England No: 2603821

VAT Reg: GB572705729

