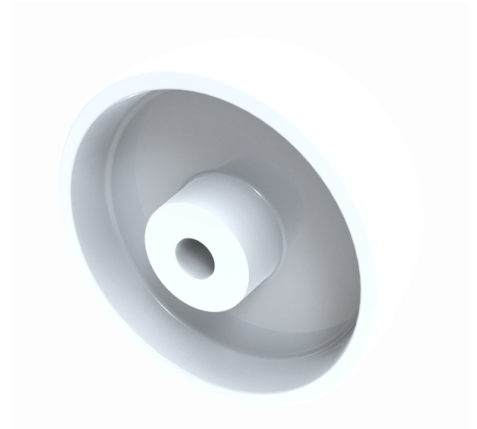


Polypropylene 100mm Plain Bearing Wheel 125kg Load

Product code: BZML100WPL

White polypropylene wheel with a plain bore. Wheel diameter 100mm, tread width 36mm, hub length 39mm, bore size 12mm. Load capacity 125kg



Wheel Material	Polypropylene
Diameter (mm)	100
Load Capacity (kg)	125
Bearing Type	Plain
Bore Size (mm)	12
Tread (mm)	36
Hub Width (mm)	39
Colour / Shore Hardness	White Polypropylene
Temperature Resistance	-15 °C TO +60 °C

BIL GROUP LTD

Porte Marsh Road, Calne, Wiltshire, SN11 9BW

Registered in England No: 2603821

VAT Reg: GB572705729

