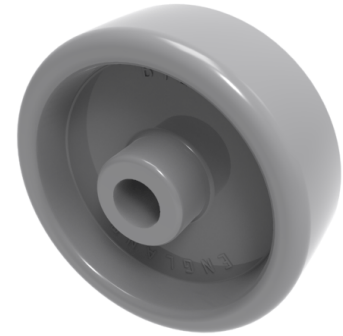


Polypropylene 50mm Plain Bearing Wheel 40kg Load

Product code: BZL50WPL/GREY



Grey propylene wheel with a plain bore. Wheel diameter 50mm, tread width 18mm, hub 21mm, bore 8mm. Load capacity 40kg.

Wheel Material	Polypropylene
Diameter (mm)	50
Load Capacity (kg)	40
Bearing Type	Plain
Bore Size (mm)	8
Tread (mm)	18
Hub Width (mm)	21
Temperature Resistance	-20 °C TO +80 °C

BIL GROUP LTD

Porte Marsh Road, Calne, Wiltshire, SN11 9BW

Registered in England No: 2603821

VAT Reg: GB572705729

