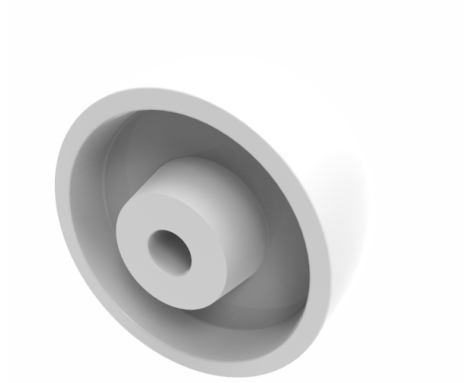


Polypropylene 80mm Plain Bearing Wheel 90kg Load

Product code: BZMM80WPL

White polypropylene wheel with a plain bore. Wheel diameter 80mm, tread width 32mm, hub length 39mm, bore size 12mm. Load capacity 90kg



Wheel Material	Polypropylene
Diameter (mm)	80
Load Capacity (kg)	90
Bearing Type	Plain
Bore Size (mm)	12
Tread (mm)	32
Hub Width (mm)	39
Colour / Shore Hardness	White Polypropylene
Temperature Resistance	-15 °C TO +60 °C

BIL GROUP LTD

Porte Marsh Road, Calne, Wiltshire, SN11 9BW

Registered in England No: 2603821

VAT Reg: GB572705729

