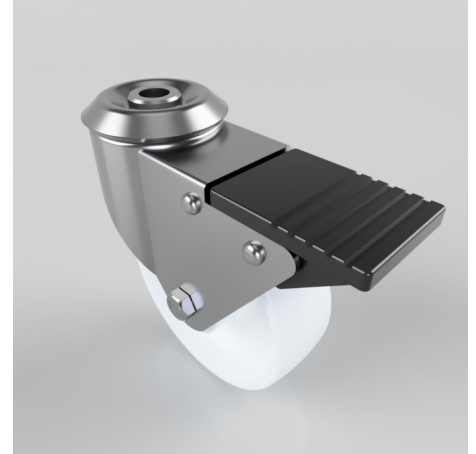


## Polypropylene Bolt Hole Swivel Castor 100mm 125kg Load

**Product code: BZBC100PLBBH12**

Pressed steel swivel castor with a 12mm bolt hole with a White polypropylene wheel with a roller bearing. Wheel diameter 100mm, tread width 32mm, overall height 126mm, Load capacity 125kg.



Diameter (mm)	100
Fixing Option	Bolt Hole
Castor Type	Swivel
Head Dia (mm)	60
Height (mm)	126
Bearing Type	Roller
Swivel Radius (mm)	88
Wheel Material	Polypropylene
Colour / Shore Hardness	White Polypropylene
Fork Thickness (mm)	2
Temperature Resistance	-20 °C TO +80 °C
To Suit Fixing Bolt (mm)	12
Tread (mm)	32
Load Capacity (kg)	125