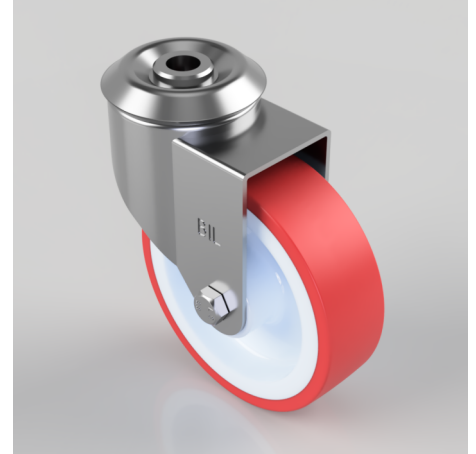


## Polypropylene Bolt Hole Swivel Castor 100mm 125kg Load

**Product code: BZBC100NPBH12**

Pressed steel swivel castor with a bolt hole fixing fitted with a red polyurethane tyre on white nylon centred wheel with a plain bore. Wheel diameter 100mm, tread width 30mm, overall height 126mm, bolt hole 12mm. Load capacity 125kg.



|                          |                                            |
|--------------------------|--------------------------------------------|
| Diameter (mm)            | 100                                        |
| Fixing Option            | Bolt Hole                                  |
| Castor Type              | Swivel                                     |
| Head Dia (mm)            | 60                                         |
| Height (mm)              | 126                                        |
| Bearing Type             | Plain                                      |
| Swivel Radius (mm)       | 88                                         |
| Wheel Material           | Polyurethane on Nylon                      |
| Colour / Shore Hardness  | Red Polyurethane on Nylon Rim / 96 Shore A |
| Fork Thickness (mm)      | 2                                          |
| Temperature Resistance   | -20 °C TO +70 °C                           |
| To Suit Fixing Bolt (mm) | 12                                         |
| Tread (mm)               | 30                                         |
| Load Capacity (kg)       | 125                                        |