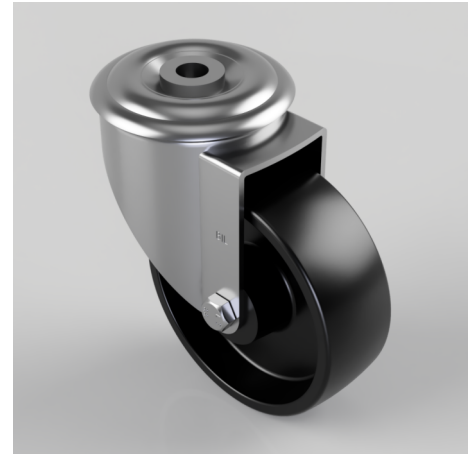


Polypropylene Bolt Hole Swivel Castor 100mm 125kg Load

Product code: BZMM100PLBH12BLK

Pressed steel swivel castor with 12mm bolt hole fixing fitted with a black polypropylene wheel with a plain bearing. Wheel diameter 100mm, tread width 36mm, overall height 128mm. Load capacity 160kg.



Diameter (mm)	100
Castor Type	Swivel
Fixing Option	Bolt Hole
Height (mm)	128
Wheel Material	Polypropylene
Colour / Shore Hardness	Black Polypropylene
Temperature Resistance	-20 °C TO +80 °C
Bearing Type	Plain
Load Capacity (kg)	160
Tread (mm)	36
Swivel Radius (mm)	88
Head Dia (mm)	76
Fork Thickness (mm)	2.5
To Suit Fixing Bolt (mm)	12