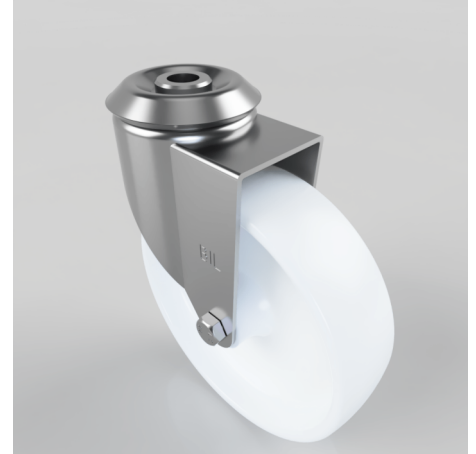


Polypropylene Bolt Hole Swivel Castor 125mm 125kg Load

Product code: BZBC125PLBH12

Pressed steel swivel castor with a 12mm bolt hole fixing fitted with a white polypropylene wheel with a plain bore. Wheel diameter 125mm, tread width 32mm, overall height 154mm. Load capacity 125kg.



Diameter (mm)	125
Fixing Option	Bolt Hole
Castor Type	Swivel
Head Dia (mm)	60
Height (mm)	154
Bearing Type	Plain
Swivel Radius (mm)	100
Wheel Material	Polypropylene
Colour / Shore Hardness	White Polypropylene
Fork Thickness (mm)	2
Temperature Resistance	-20 °C TO +80 °C
To Suit Fixing Bolt (mm)	12
Tread (mm)	35
Load Capacity (kg)	125