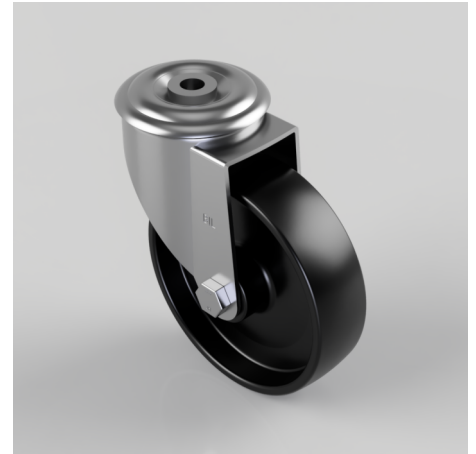


Polypropylene Bolt Hole Swivel Castor 125mm 140kg Load

Product code: BZMM125PLBBH12/BLK

Pressed steel swivel castor with a bolt hole fixing fitted with a black polypropylene wheel with roller bearing bore. Wheel diameter 125mm, tread width 35mm, overall height 155mm, bolt hole 12mm. Load capacity 140kg.



Diameter (mm)	125
Castor Type	Swivel
Fixing Option	Bolt Hole
Height (mm)	155
Wheel Material	Polypropylene
Colour / Shore Hardness	Black Polypropylene
Temperature Resistance	-20 °C TO +80 °C
Bearing Type	Roller
Load Capacity (kg)	140
Tread (mm)	35
Swivel Radius (mm)	104
Head Dia (mm)	76
Fork Thickness (mm)	2.5
To Suit Fixing Bolt (mm)	12