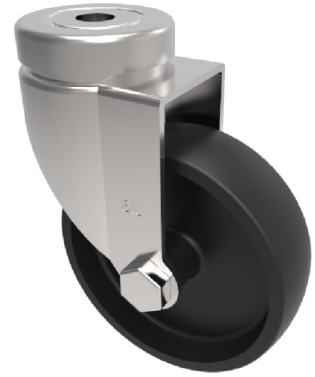


## Polypropylene Bolt Hole Swivel Castor 50mm 50kg Load

**Product code: BZA50PLBH10**

Pressed steel swivel castor with 10mm bolt hole fixing fitted with a black polypropylene wheel plain bore. Wheel diameter 50mm, tread width 20mm, overall height 72mm. Load capacity 50kg.



Diameter (mm)	50
Fixing Option	Bolt Hole
Castor Type	Swivel
Head Dia (mm)	41
Height (mm)	72
Bearing Type	Plain
Swivel Radius (mm)	53
Wheel Material	Polypropylene
Colour / Shore Hardness	Black Polypropylene
Fork Thickness (mm)	2
Temperature Resistance	-15 °C TO +80 °C
To Suit Fixing Bolt (mm)	10
Tread (mm)	18
Load Capacity (kg)	40