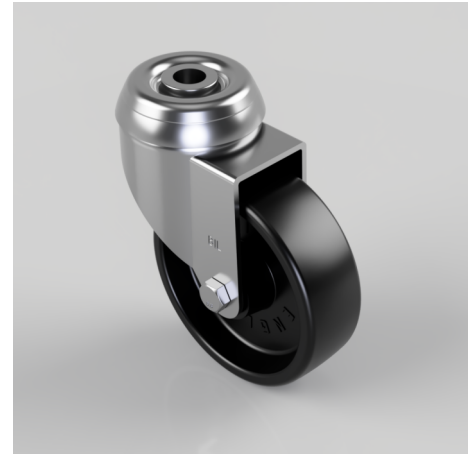


## Polypropylene Bolt Hole Swivel Castor 75mm 70kg Load

**Product code: BZD75PLBH10**

Pressed steel swivel castor with a 10mm bolt hole fixing fitted with black polypropylene wheel with a plain bore. Wheel diameter 75mm, tread width 25mm, overall height 99mm. Load capacity 70kg.



|                          |                     |
|--------------------------|---------------------|
| Diameter (mm)            | 75                  |
| Fixing Option            | Bolt Hole           |
| Castor Type              | Swivel              |
| Head Dia (mm)            | 48                  |
| Height (mm)              | 99                  |
| Bearing Type             | Plain               |
| Swivel Radius (mm)       | 66                  |
| Wheel Material           | Polypropylene       |
| Colour / Shore Hardness  | Black Polypropylene |
| Fork Thickness (mm)      | 2                   |
| Temperature Resistance   | -15 °C TO +80 °C    |
| To Suit Fixing Bolt (mm) | 10                  |
| Tread (mm)               | 25                  |
| Load Capacity (kg)       | 70                  |