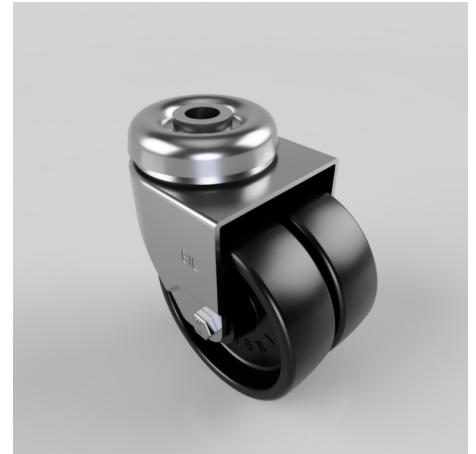


Polypropylene Bolt Hole Swivel Castor 75mm 90kg Load

Product code: 2BZD75PLBH12

Pressed steel twin wheel swivel castor with a 12mm bolt hole fixing fitted with 2 black polypropylene wheels with a plain bore. Wheel diameter 75mm, tread width 25mm x 2, overall height 103mm. Load capacity 90kg.



Diameter (mm)	75
Fixing Option	Bolt Hole
Castor Type	Swivel
Head Dia (mm)	57
Height (mm)	99
Bearing Type	Plain
Swivel Radius (mm)	70
Wheel Material	Polypropylene
Colour / Shore Hardness	Black Polypropylene
Fork Thickness (mm)	2
Temperature Resistance	-15 °C TO +80 °C
To Suit Fixing Bolt (mm)	12
Tread (mm)	2 x 25
Load Capacity (kg)	90