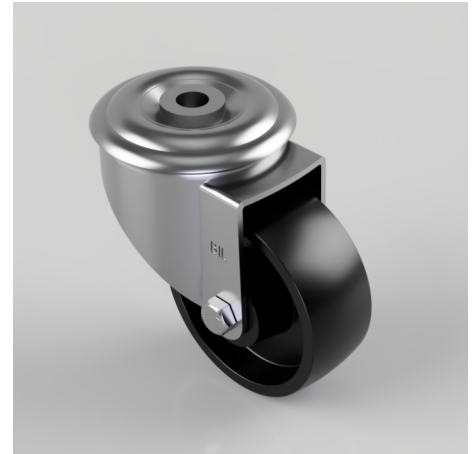


Polypropylene Bolt Hole Swivel Castor 80mm 90kg Load

Product code: BZMM80PLBH12BLK

Pressed steel swivel castor with 12mm bolt hole fixing fitted with a black polypropylene wheel with plain bore. Wheel diameter 80mm, tread width 32mm, overall height 105mm, Load capacity 110kg.



Diameter (mm)	80
Castor Type	Swivel
Fixing Option	Bolt Hole
Height (mm)	105
Wheel Material	Polypropylene
Colour / Shore Hardness	Black Polypropylene
Temperature Resistance	-20 °C TO +80 °C
Bearing Type	Plain
Load Capacity (kg)	110
Tread (mm)	32
Swivel Radius (mm)	78
Head Dia (mm)	76
Fork Thickness (mm)	2.5
To Suit Fixing Bolt (mm)	12

BIL GROUP LTD

Porte Marsh Road, Calne, Wiltshire, SN11 9BW

Registered in England No: 2603821

VAT Reg: GB572705729

