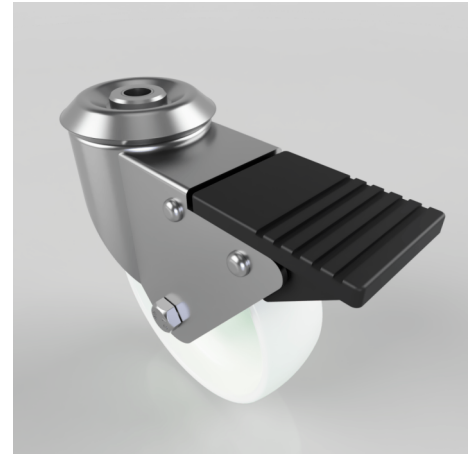


Polypropylene Bolt Hole Swivel Castor Brake 100mm 125kg Load

Product code: BZBC100PLBH10SWB

Pressed steel swivel castor with a 10mm bolt hole fixing fitted with a white polypropylene wheel with a plain bore and swivel wheel brake. Wheel diameter 100mm, tread width 32mm, overall height 126mm. Load capacity 125kg.



Diameter (mm)	100
Fixing Option	Bolt Hole
Castor Type	Swivel with Total Lock Brake
Head Dia (mm)	60
Height (mm)	126
Bearing Type	Plain
Swivel Radius (mm)	115
Wheel Material	Polypropylene
Colour / Shore Hardness	White Polypropylene
Fork Thickness (mm)	2
Temperature Resistance	-20 °C TO +80 °C
To Suit Fixing Bolt (mm)	10
Tread (mm)	32
Load Capacity (kg)	125