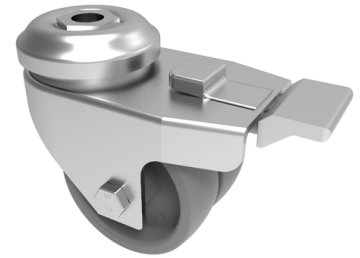


Polypropylene Bolt Hole Swivel Castor Brake 50mm 60kg Load

Product code: 2BZD50PLBH10SWB/GREY

Pressed steel twin wheel swivel castor with a 10mm bolt hole fixing fitted with 2 grey polypropylene wheels with a Plain Bore and swivel wheel brake. Wheel diameter 50mm, tread width 18mm x 2, overall height 73mm. Load capacity 60kg.



Diameter (mm)	50
Fixing Option	Bolt Hole
Castor Type	Swivel with Total Lock Brake
Head Dia (mm)	45
Height (mm)	68
Bearing Type	Plain
Swivel Radius (mm)	80
Wheel Material	Polypropylene
Colour / Shore Hardness	Black Polypropylene
Fork Thickness (mm)	2
Temperature Resistance	-15 °C TO +80 °C
To Suit Fixing Bolt (mm)	10
Tread (mm)	2 x 18
Load Capacity (kg)	60