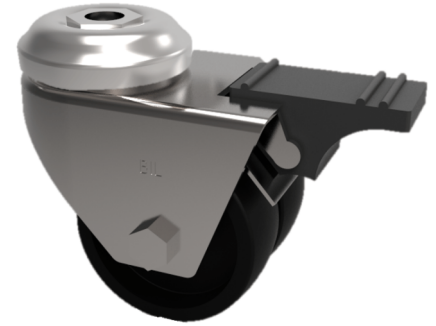


## Polypropylene Bolt Hole Swivel Castor Brake 75mm 80kg Load

**Product code: 2BZA75PLBH10SWB**



Twin wheeled pressed steel swivel castor with a bolt hole fixing fitted with 2 black polypropylene wheels with plain bores and total lock brake. Wheel diameter 75mm, tread width 2 x 22mm, overall height 101mm, Load capacity 80kg.

Diameter (mm)	75
Fixing Option	Bolt Hole
Castor Type	Swivel with Total Lock Brake
Head Dia (mm)	55
Height (mm)	101
Bearing Type	Plain
Swivel Radius (mm)	97
Wheel Material	Polypropylene
Colour / Shore Hardness	Black Polypropylene
Fork Thickness (mm)	2.5
Temperature Resistance	-15 °C TO +80 °C
To Suit Fixing Bolt (mm)	10
Tread (mm)	2 x 22
Load Capacity (kg)	80