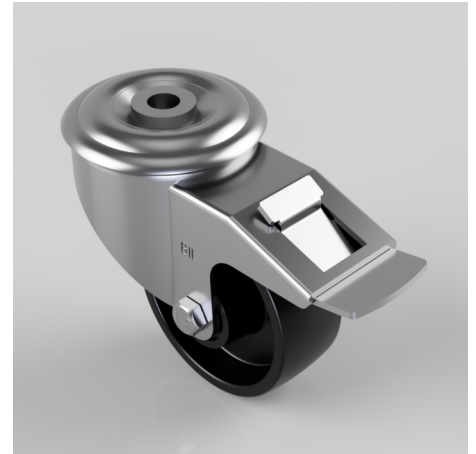


## Polypropylene Bolt Hole Swivel Castor Brake 80mm 110kg Load

**Product code: BZMM80PLBBH12SWBBLK**

Pressed steel swivel castor with 12mm bolt hole fitted with a black polypropylene wheel with roller bearing and total brake. Wheel diameter 80mm, tread width 32mm, overall height 105mm, Load capacity 110kg.



Diameter (mm)	80
Castor Type	Swivel with Total Lock Brake
Fixing Option	Bolt Hole
Height (mm)	105
Wheel Material	Polypropylene
Colour / Shore Hardness	Black Polypropylene
Temperature Resistance	-20 °C TO +80 °C
Bearing Type	Roller
Load Capacity (kg)	110
Tread (mm)	32
Swivel Radius (mm)	112
Head Dia (mm)	76
Fork Thickness (mm)	2.5
To Suit Fixing Bolt (mm)	12