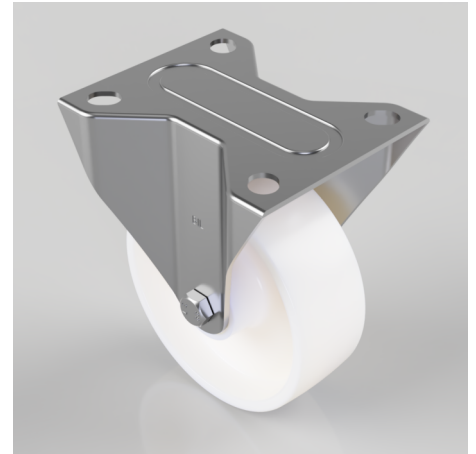


Polypropylene Plate Fixed Castor 100mm 160kg Load

Product code: BZMMF100PLB

Pressed steel fixed castor with a top plate fixing fitted with a white polypropylene wheel with a roller bearing. Wheel diameter 100mm, tread width 36mm, overall height 128mm, top plate 105mm x 85mm, hole centres 80mm x 60mm. Load capacity 160kg.



| | |
|--------------------------|---------------------|
| Diameter (mm) | 100 |
| Castor Type | Fixed |
| Fixing Option | Plate |
| Height (mm) | 128 |
| Wheel Material | Polypropylene |
| Colour / Shore Hardness | White Polypropylene |
| Temperature Resistance | -20 °C TO +80 °C |
| Bearing Type | Roller |
| Load Capacity (kg) | 160 |
| Tread (mm) | 36 |
| Plate Size (mm) | 105 X 85 |
| Hole Centres (mm) | 80 X 60 |
| Top Plate Thickness (mm) | 2 |
| Fork Thickness (mm) | 2 |
| To Suit Fixing Bolt (mm) | 8 |