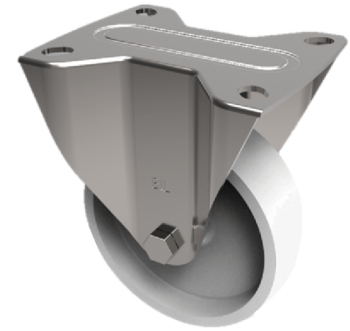


## Polypropylene Plate Fixed Castor 125mm 140kg Load

**Product code: BZMMF125PLB**



Pressed steel fixed castor with a top plate fixing fitted with a white polypropylene wheel with a roller bearing. Wheel diameter 125mm, tread width 40mm, overall height 155mm, top plate 105mm x 85mm, hole centres, 80mm x 60mm. Load capacity 140kg.

Diameter (mm)	125
Castor Type	Fixed
Fixing Option	Plate
Height (mm)	155
Wheel Material	Polypropylene
Colour / Shore Hardness	White Polypropylene
Temperature Resistance	-20 °C TO +80 °C
Bearing Type	Roller
Load Capacity (kg)	140
Tread (mm)	40
Plate Size (mm)	105 X 85
Hole Centres (mm)	80 X 60
Top Plate Thickness (mm)	2
Fork Thickness (mm)	2
To Suit Fixing Bolt (mm)	8