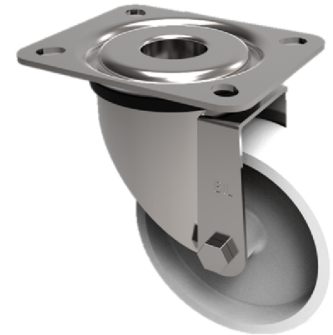


## Polypropylene Plate Swivel Castor 100mm 125kg Load

**Product code: BZMM100PL**



Pressed steel swivel castor with top plate fixing fitted with a white polypropylene wheel with plain bore. Wheel diameter 100mm, tread width 36mm, overall height 128mm, Plate size 105mm x 85mm, hole centres 80mm x 60mm. Load capacity 125kg.

Diameter (mm)	100
Castor Type	Swivel
Fixing Option	Plate
Height (mm)	128
Wheel Material	Polypropylene
Colour / Shore Hardness	White Polypropylene
Temperature Resistance	-20 °C TO +80 °C
Bearing Type	Plain
Load Capacity (kg)	125
Tread (mm)	36
Swivel Radius (mm)	88
Plate Size (mm)	105 X 85
Hole Centres (mm)	80 X 60
Top Plate Thickness (mm)	2
Fork Thickness (mm)	2
To Suit Fixing Bolt (mm)	8