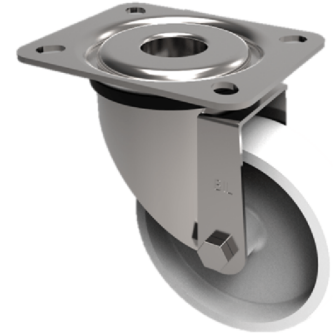


## Polypropylene Plate Swivel Castor 125mm 125kg Load

**Product code: BZBC125PLB**



Pressed steel swivel castor with a top plate fixing fitted with a white polypropylene wheel with a roller bearing. Wheel diameter 125mm, tread width 32mm, overall height 154mm, plate size 102mm x 84mm, hole centres 80mm x 60mm. Load capacity 125kg.

Diameter (mm)	125
Fixing Option	Plate
Castor Type	Swivel
Plate Size (mm)	102 x 84
Hole Centres (mm)	80 X 60
Height (mm)	154
Bearing Type	Roller
Swivel Radius (mm)	100
Wheel Material	Polypropylene
Colour / Shore Hardness	White Polypropylene
Top Plate Thickness (mm)	2
Fork Thickness (mm)	2
Temperature Resistance	-20 °C TO +80 °C
To Suit Fixing Bolt (mm)	8
Tread (mm)	35
Load Capacity (kg)	125