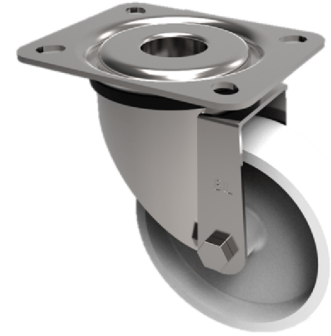


Polypropylene Plate Swivel Castor 125mm 180kg Load

Product code: SSMM125PL



Grade 304 Pressed stainless steel swivel castor with a top plate fixing fitted with a white polypropylene wheel with a plain bore. Wheel diameter 125mm, tread width 40mm, overall height 155mm, top plate 105mm x 85mm, hole centres 80mm x 60mm. Load capacity 180kg.

Diameter (mm)	125
Fixing Option	Plate
Castor Type	Swivel
Height (mm)	155
Wheel Material	Polypropylene
Colour / Shore Hardness	White Polypropylene
Bearing Type	Plain
Tread (mm)	37
Fork Thickness (mm)	2
To Suit Fixing Bolt (mm)	8
Load Capacity (kg)	180
Temperature Resistance	-10 °C TO +60 °C
Plate Size (mm)	105 X 85
Hole Centres (mm)	80 X 60
Top Plate Thickness (mm)	2
Swivel Radius (mm)	95

BIL GROUP LTD

Porte Marsh Road, Calne, Wiltshire, SN11 9BW

Registered in England No: 2603821

VAT Reg: GB572705729

